



## Summary of Chapter 16 of the Líng Shū

Yíng Qì – The Ying-energy

### Paragraph 1

Huáng Dì:

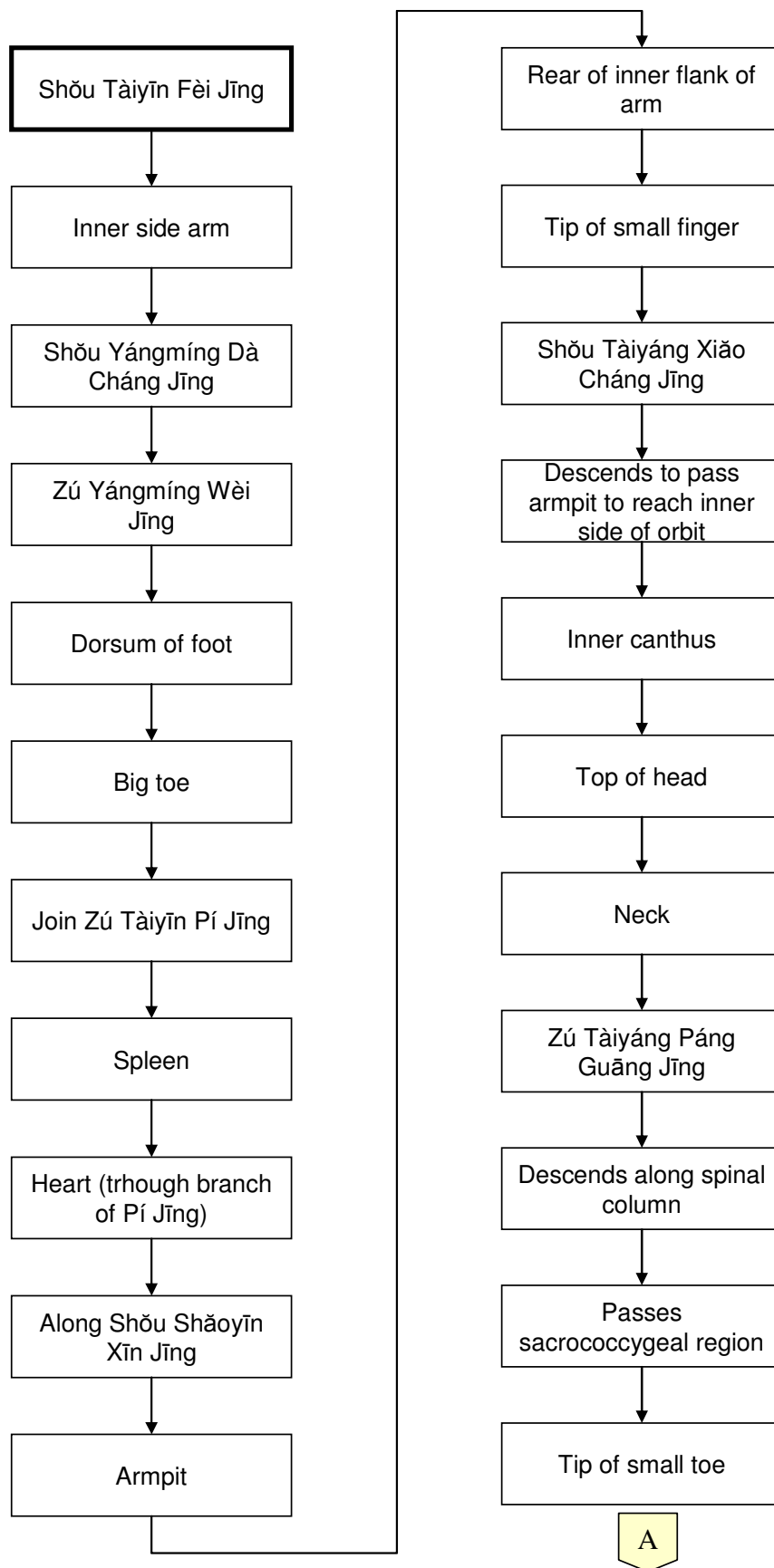
Yíng Qì receive the cereals.

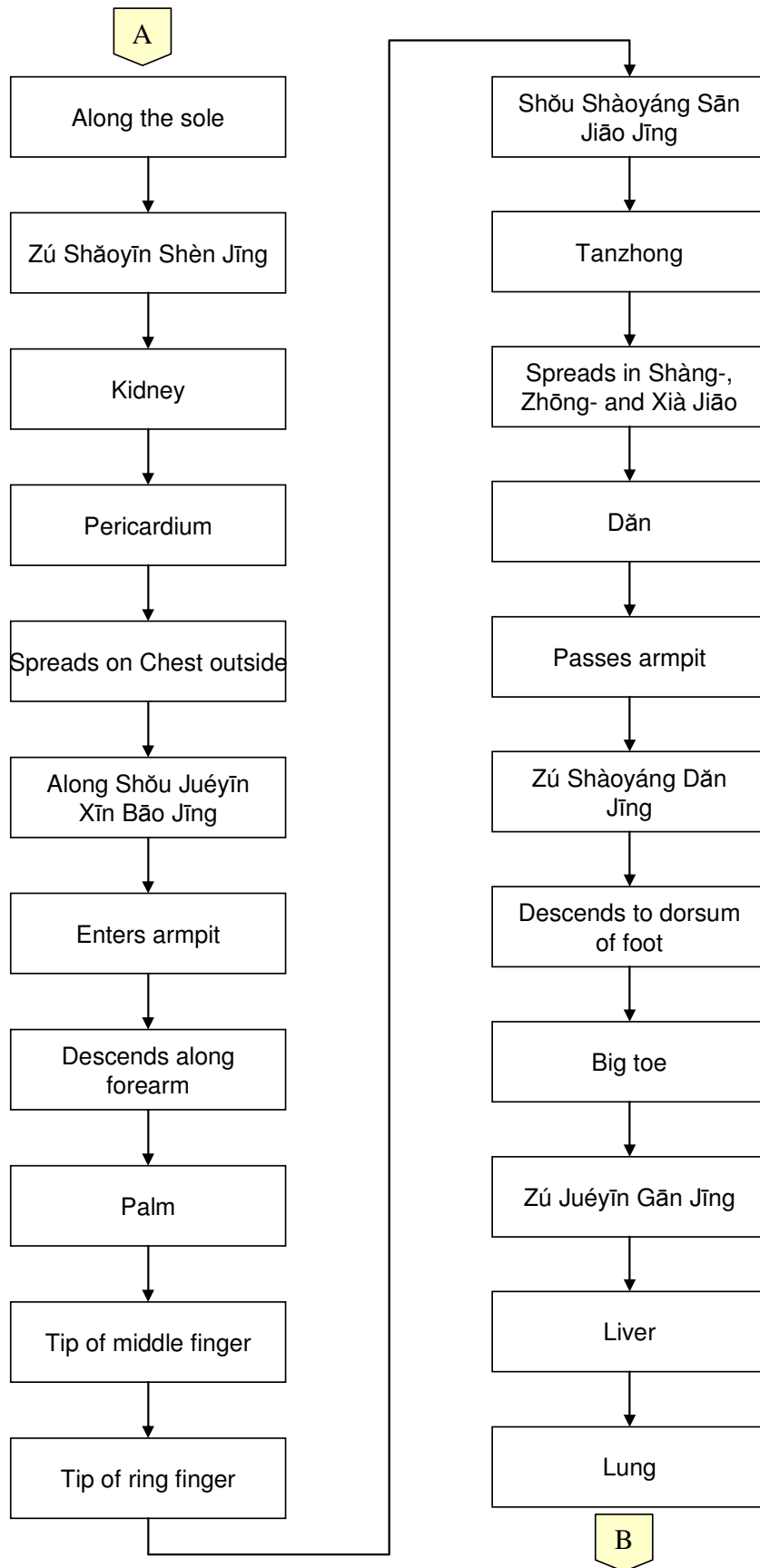
Water and cereals enter Wèi-Stomach.

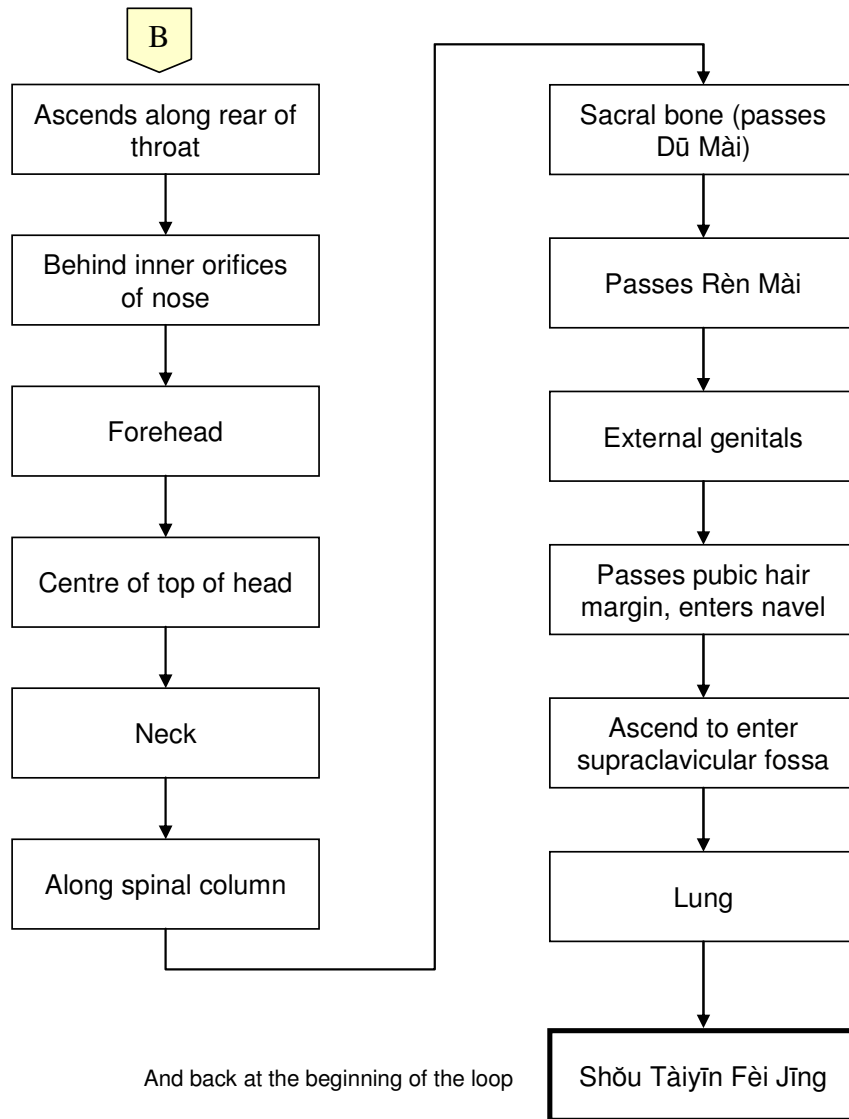
Transformed refined substances will be transferred to Fèi, the five Zàng and six Fǔ.

The pathway of the Yíng Qì is as follows:

Please see the next pages.







## Bibliography

- [1] Wiseman N. and Feng Ye. *A practical dictionary of Chinese Medicine*, paradigm publications. 1998.
- [2] Nelson Liansheng Wu and Andrew. Qi Wu, *Yellow Empero's Canon Internal Medicine*. China Science & Technology Press, 1999.